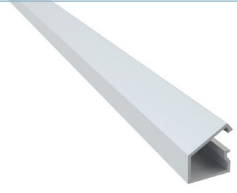


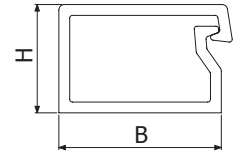


MCA

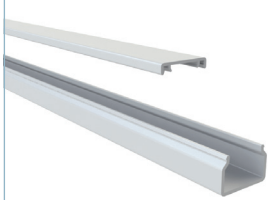


L = 2 m (6 ft)

	H		B		PVC M1	
	mm	inch	mm	inch	REF.	kg/m
MCA 10X10	10	2/5"	10	2/5"	2/17516	0,08
MCA 10X15	10	2/5"	15	3/5"	2/17517	0,09
MCA 10X20	10	2/5"	20	4/5"	2/17518	0,11

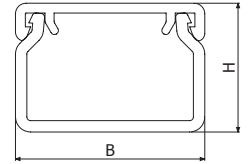


BPB

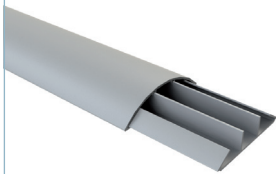


L = 2 m (6 ft)

	H		B		PVC M1	
	mm	inch	mm	inch	REF.	kg/m
BPB 25X25	25	1"	25	1"	2/1128	0,2
BPB 40X40	40	1 4/7"	40	1 4/7"	2/1129	0,42
BPB 40X60	40	1 4/7"	60	2 1/3"	2/1130	0,58
BPB 60X60	60	2 1/3"	60	2 1/3"	2/5835	0,6
BPB 60X100	60	2 1/3"	100	4"	2/6435	0,77



CAP



L = 2 m (6 ft)

	H		B		PVC M1 7030		PVC M1	
	mm	inch	mm	inch	REF.	kg/m	REF.	kg/m
CAP 12X50	12	1/2"	50	2"	2/18547	0,26	2/17519	0,26
CAP 17X75	17	2/3"	75	3"	2/18548	0,42	2/17520	0,42

